

4

3

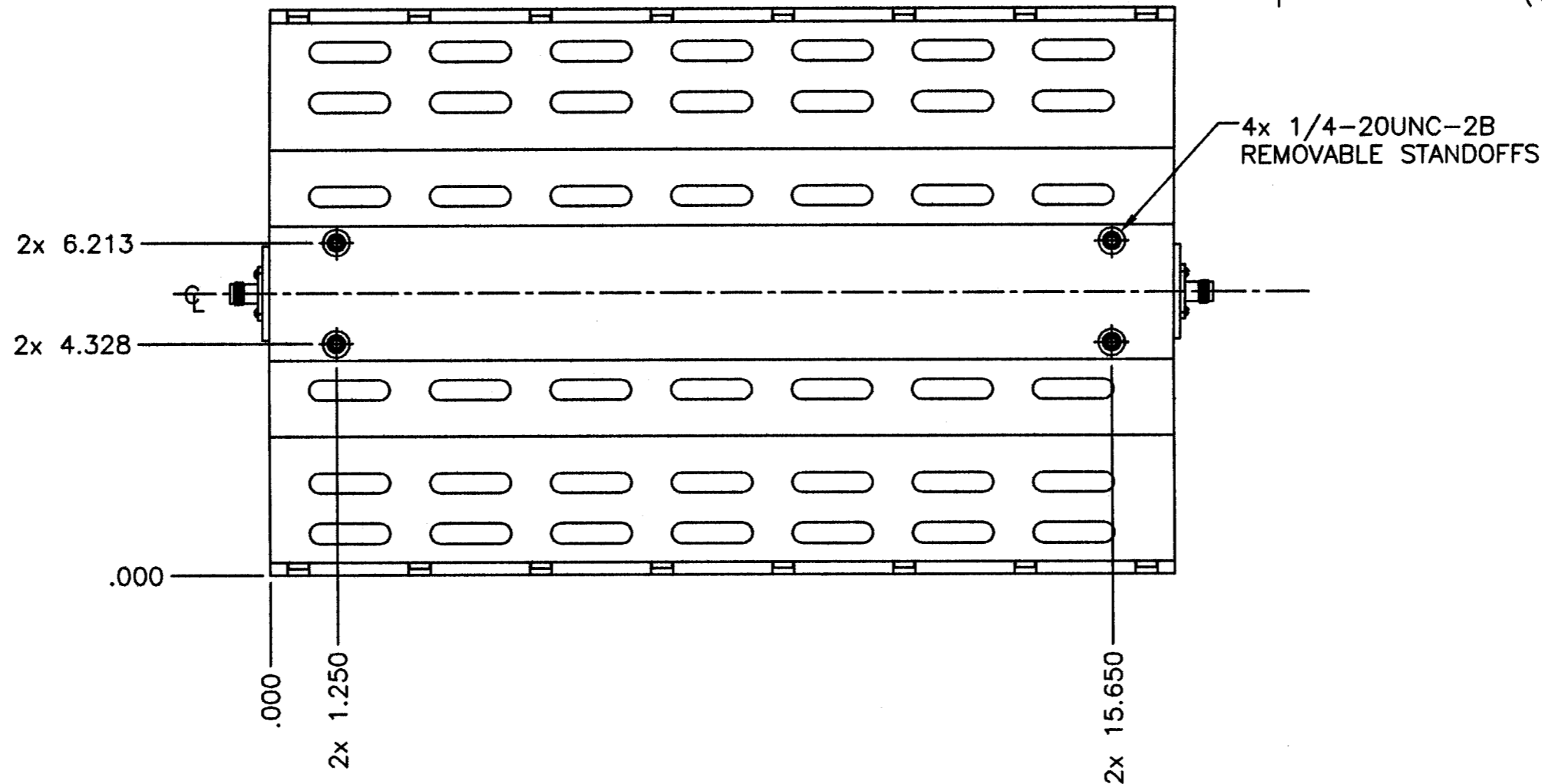
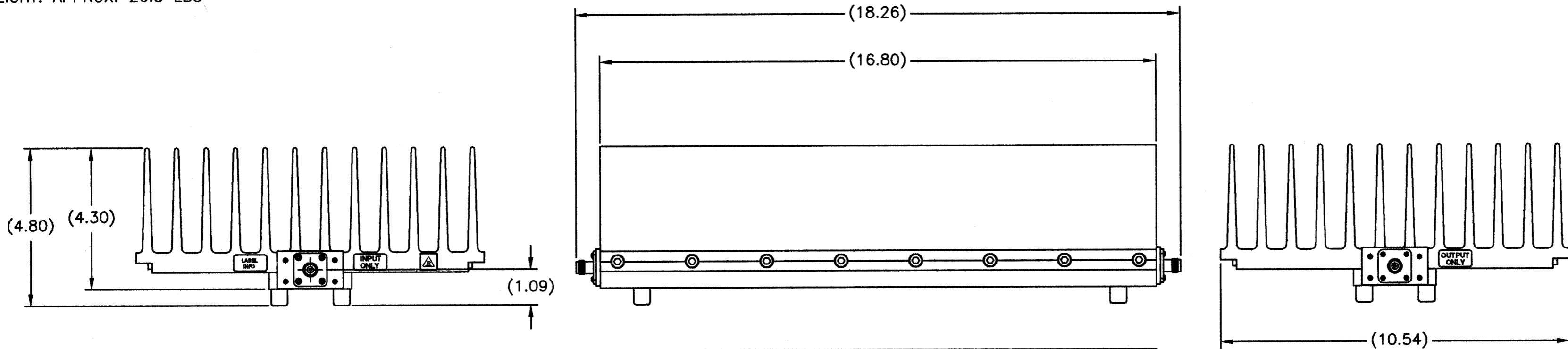
2

1

SPECIFICATIONS:

IMPEDANCE: 50 OHMS NOMINAL
 FREQUENCY RANGE: DC TO 2.4GHz
 VSWR: DC TO 1GHz AT 1.10:1 MAX.
 1GHz TO 2.4 GHz AT 1.25:1 MAX.
 POWER RATING: 1000 WATTS AVG. (UNI-DIRECTIONAL) AT 25°C AMBIENT
 COOLING FIN: ALUMINUM, BLACK ANODIZED
 COVER: ALUMINUM, BLACK ANODIZED
 CONNECTORS: TNC FEMALE, TRI-ALLOY PLATED
 OPERATING POSITION: ANY POSITION EXCEPT MOUNTING SURFACE UP
 NOMINAL SIZE: APPROX. 18.26" L X 10.54" W X 4.800" H
 WEIGHT: APPROX. 26.5 LBS

REVISIONS		DWG. NO.	1000-WA-FFT-XX	SHEET	REV
ZONE	REV	DESCRIPTION	DATE	1	B
	A	RELEASED TO PRODUCTION	5-24-01		MAR
	B	ECN #0260	8-11-00		MAR



XX = DASH NUMBER (dB VALUE)

-30	30	±1.0 dB	-0.5 dB/+1.5dB
-20	20	±0.6 dB	-0.5 dB/+1.5dB
-10	10	±0.6 dB	-0.5 dB/+1.5dB
-06	6	±0.6 dB	-0.5 dB/+1.2dB
-03	3	±0.5 dB	-0.5 dB/+1.0dB
DASH NO.	dB ATTEN.	DC - 1GHz	1 - 2.4GHz ATTENUATOR ACCURACY ±dB

NOTE:
 FOR VALUES NOT LISTED, REFER TO THE NEXT HIGHER ATTENUATION LEVEL FOR SPECIFICATIONS. FOR ATTENUATION VALUES GREATER THAN THE HIGHEST LISTED ATTENUATION VALUE, REFER TO THE VALUE 1/2 THE DESIRED ATTENUATION LEVEL, THEN DOUBLE THE LISTED SPECIFICATION VALUES, UNLESS OTHERWISE SPECIFIED.

UNLESS OTHERWISE SPECIFIED DIMENSIONS ARE IN INCHES
 TOLERANCES ARE:
 FRACTIONS DECIMALS ANGLES
 ± 1/64 ± 0.010 ± 30'
 ± 0.005 ± 0.005 ± 30'

MILLIMETERS
 .X = ±.4
 .XX = ±.12

DO NOT SCALE DRAWING

THIS DRAWING IS THE PROPERTY OF THE BIRD ELECTRONIC CORPORATION. THE DESIGNS AND SPECIFICATIONS DISCLOSED HEREON ARE PROPRIETARY AND SHALL NOT BE REPRODUCED, NOR COPIED, NOR USED AS THE BASIS FOR THE MANUFACTURE OR SALE OF APPARATUS OR DEVICES WITHOUT THEIR EXPRESS WRITTEN CONSENT.



MATERIAL	APPROVALS	DATE	TITLE
	D.M.RINK	4-2-03	ATTENUATOR, CONVECTION COOLED TNC FEMALE/FEMALE, 1000W
FINISH	MARCY	6-23-03	
	AUTOCAD		
SIZE	FSCM NO.	DWG. NO.	REV
C	70998	1000-WA-FFT-XX	B
SCALE	1:1	COMM CODE	AT1
		SHEET	1 OF 1

4

3

2

1